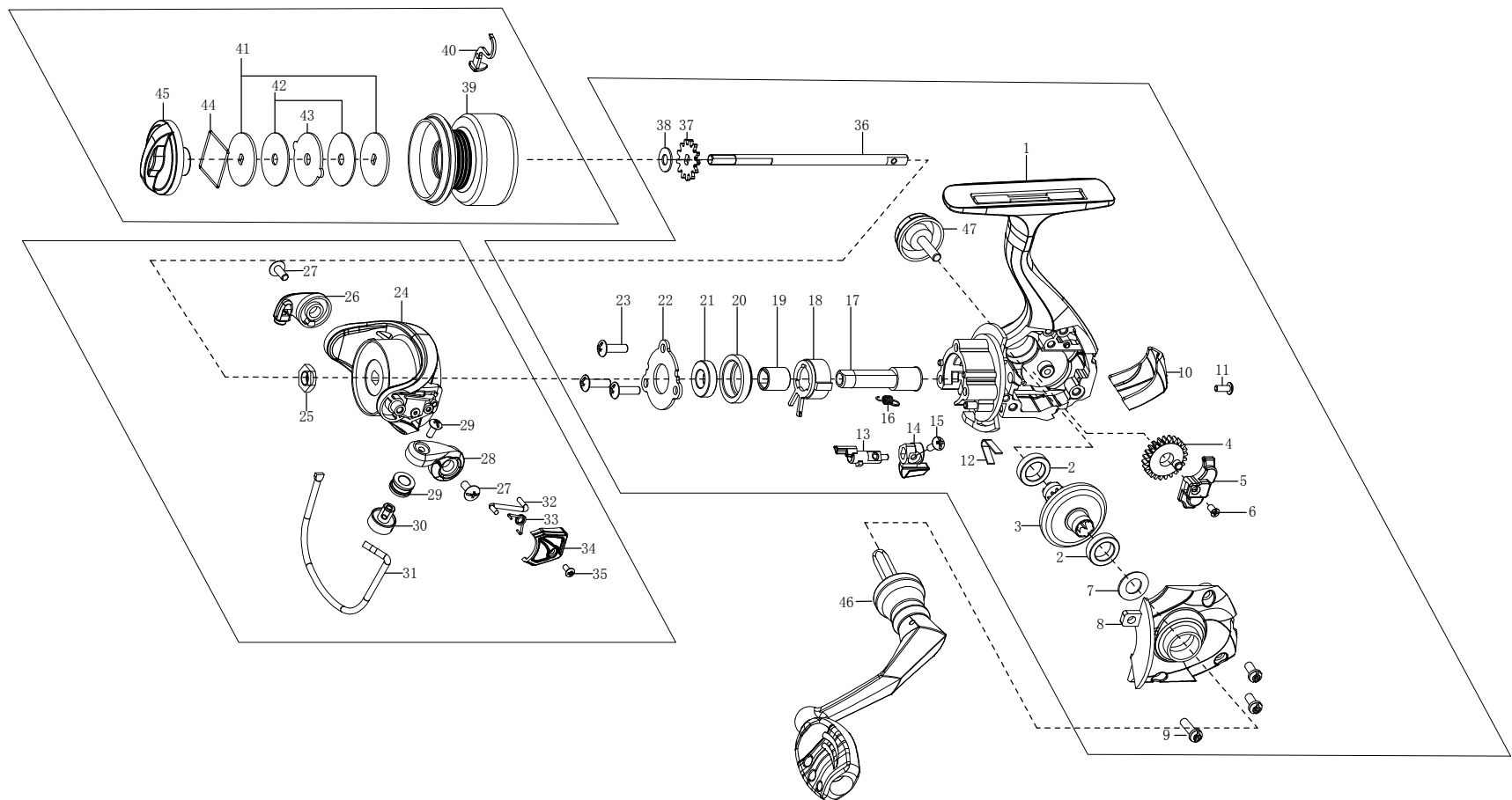


# Spinning reel



- |                              |                               |
|------------------------------|-------------------------------|
| 1 main body                  | 26 square seats               |
| 2 Chainring locating bearing | 27 Angled square seat screw   |
| 3 chainrings                 | 28 Bend                       |
| 4 drive gears                | 29 line pulley                |
| 5 slider                     | 30 line loop                  |
| 6 Slider screws              | 31 throw line guide           |
| 7 Gasket                     | 32 Throwing lever             |
| 8 Main cover                 | 33 Curved seat torsion spring |
| 9 Slider                     | 34 line seat side piece       |
| 10 Decorative cover          | 35 Side panel fixing screws   |
| 11 Decorative cover screws   | 36 Spindles                   |
| 12 Reaction button shrapnel  | 37 sound gear                 |
| 13 Reaction lever            | 38 Gasket                     |
| 14 Reverse button            | 39 spool                      |
| 15 Reverse button screw      | 40 clamps the line            |
| 16 single tension spring     | 41 Brake pads                 |
| 17 shank                     | 42 brake pads                 |
| 18 single bearing            | 43 ear spacers                |
| 19 single-piece inner sleeve | 44 Four-corner circlip        |
| 20 Bearing sleeve            | 45 Brake knob                 |
| 21 One-way rack bearing      | 46 handle group               |
| 22 Bearing stop              | 47 handle cover               |
| 23 Fixing screws             |                               |
| 24 line holder               |                               |
| 25 line seat retaining nut   |                               |